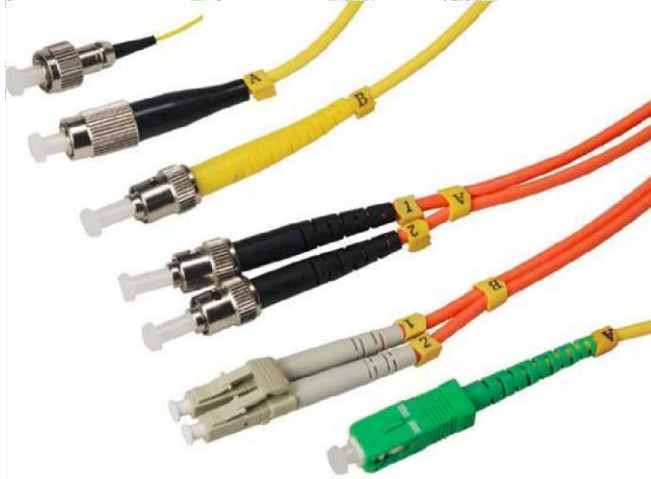


Fiber Optic Patch Cord –G.652D

2.0mm Duplex



Applications

- Optical networks (FTTx, PON, CATV)
- Data Centers
- Equipment distribution areas
- Equipment test areas
- Cross-connect applications
- Transmission systems
- Storage systems
- Switching Systems
- DWDM systems

Features

- Compatible with industry standard, Telcordia's GR-326-Core, IEC Standard
- RoHS Standard
- High reliability and stability in various environments
- 100% polished and performance testing
- High-quality of repeatability and matching suitability, Support more than 1000 times insertion

Specifications

| Characteristics | Value/Performance |
|--|---|
| Fiber type | OS2, ITU-G652D, Duplex |
| Cable type | Single mode 9/125um |
| Concentric errors | < 0,6 μm |
| Field diameter mode | @ 1310nm: 9,2μm ±0,4μm @ 1550nm: 10,4μm ±0,8μm |
| Jacket type | LSZH 2.0mm diameter |
| Jacket color | Yellow color |
| IL (Insertion Loss) | ≤0.3 dB (according to IEC 61300-3-6 standard) |
| RL (Return Loss) | UPC≥55Db, APC≥60dB |
| Working wavelength range | <ul style="list-style-type: none"> - 1310nm/1550nm - 1510nm (signal OSC) - C band frequency range: 1530nm ÷ 1565nm |
| Interchangeability | ≤0.2dB |
| Repeatability | ≤0.1dB (1000 times) |
| Vibration | ≤0.1dB (550HZ, 1.5mm) |
| Operating temperature | -20~75°C |
| Wavelength | 1310nm, 1550nm |
| Operating tensile strength | 100 N |
| Installing tensile strength | 200 N |
| Impact resistance with potential energy 0.74 Nm/hammerhead radius R=25mm | ≥ 20 Times |
| Frequent crush strength | ≥100 N/cm |
| Short-term crush strength | ≥100 N/cm |
| Label | The cable body specifies the parameters, manufacturer, length, etc |
| Mechanical durability of connection | ≥ 300 time |
| Unevenroundness of the sheath | < 2% |
| Longevity | ≥ 15 years |
| Minimum bend radius | ≤ 30mm |
| Length | Customized |

Model:

| | |
|----------------------------|---|
| US-LC/UPC-SC/APC-DX-SM-10m | Optical fiber LC/UPC-SC/APC, duplex, single mode, 10m |
| US-LC/APC-SC/APC-DX-SM-10m | Optical fiber LC/APC-SC/APC, duplex, single mode,10m |
| US-LC/UPC-SC/UPC-DX-SM-10m | Optical fiber LC/UPC-SC/UPC, duplex, single mode,10m |
| US-LC/APC-LC/APC-DX-SM-10m | Optical fiber LC/APC-LC/APC, duplex, single mode,10m |
| US-SC/APC-SC/APC-DX-SM-10m | Optical fiber SC/APC-SC/APC, duplex, single mode,10m |