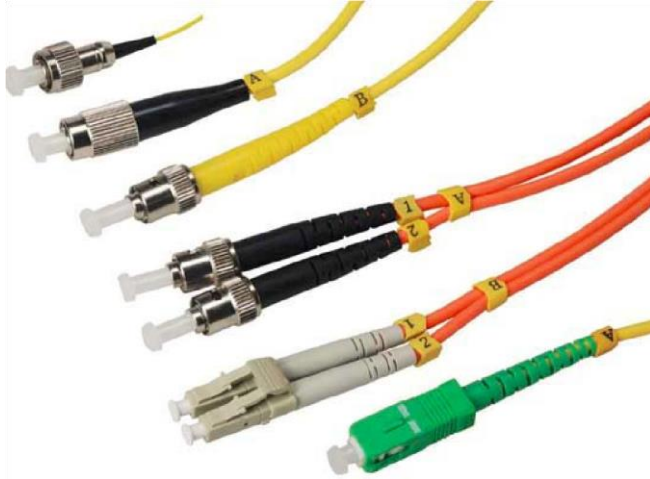


Fiber Optic Patch Cord –G.652D

2.0mm Duplex



Applications

- Optical networks (FTTx, PON, CATV)
- Data Centers
- Equipment distribution areas
- Equipment test areas
- Cross-connect applications
- Transmission systems
- Storage systems
- Switching Systems
- DWDM systems

Features

- Compatible with industry standard, Telcordia's GR-326-Core, IEC Standard
- RoHS Standard
- High reliability and stability in various environments
- 100% polished and performance testing
- High-quality of repeatability and matching suitability, Support more than 1000 times insertion

Specifications

Characteristics	Value/Performance
Fiber type	OS2, TU-G652D, Duplex
Cable type	Single mode 9/125um
Concentric errors	< 0,6 μm
Field diameter mode	@1310nm: 9,2μm ±0,4μm @1550nm: 10,4μm ±0,8μm
Jacket type	LSZH 2.0mm diameter
Jacket color	Yellow color
IL (Insertion Loss)	≤0.3 dB (according to IEC 61300-3-3 standard)
RL (Return Loss)	UPC≥55Db, APC≥60dB
Working wavelength range	<ul style="list-style-type: none"> - 1310nm/1550nm - 1510nm (signal OSC) - C band frequency range: 1530nm ÷ 1565nm
Interchangeability	≤0.2dB
Repeatability	≤0.1dB (1000 times)
Vibration	≤0.1dB (550HZ, 1.5mm)
Operating temperature	-20~75°C
Wavelength	1310nm, 1550nm
Operating tensile strength	100 N
Installing tensile strength	200 N
Impact resistance with potential energy 0.74 Nm/hammerhead radius R=25mm	≥ 20 Times
Frequent crush strength	≥100 N/cm
Short-term crush strength	≥100 N/cm
Label	The cable body specifies the parameters, manufacturer, length, etc
Mechanical durability of connection	≥ 300 time
Unevenroundness of the sheath	< 2%
Longevity	≥ 15 years
Minimum bend radius	≤ 30mm

Model:

US-LC/UPC-SC/APC-DX-10m	Optical fiber LC/UPC-SC/APC, duplex, single mode
US-LC/APC-SC/APC-DX-10m	Optical fiber LC-SC/APC, duplex, single mode
US-LC/UPC-SC/UPC-DX-10m	Optical fiber LC-SC/UPC, duplex, single mode
US-LC/APC-LC/APC-DX-10m	Optical fiber LC-LC/APC, duplex, single mode
US-SC/APC-SC/APC-DX-10m	Optical fiber LC-SC/APC, duplex, single mode