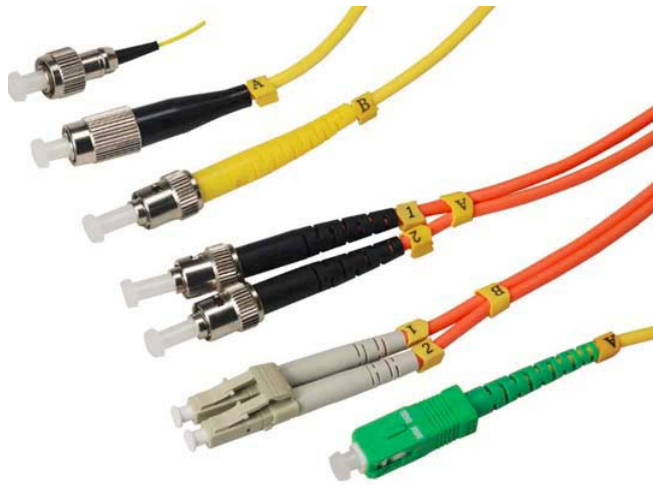


# Fiber Optic Patch Cord –G.652D duplex



## Applications

- Optical networks (FTTx, PON, CATV)
- Data Centers
- Equipment distribution areas
- Equipment test areas
- Cross-connect applications
- Transmission systems
- Storage systems
- Switching Systems
- DWDM systems

## Features

- Compatible with industry standard, Telcordia's GR-326-Core, IEC Standard
- RoHS Standard
- High reliability and stability in various environments
- 100% polished and performance testing
- High-quality of repeatability and matching suitability, Support more than 1000 times insertion

**Specifications**

Parameters	Specifications
Fiber type	Single mode
Standard	ITU-T G652D
Wavelength (nm)	1310nm, 1550nm
Overall Diameter (μm)	125 ± 1
Optical fiber diameter (μm)	9.2 ± 0.5
Maximum loss at 1310nm wavelength (dB/km)	≤ 0.36 dB/km
Maximum loss at 1550nm wavelength (dB/km)	≤ 0.30 dB/km
CD Optical dispersion at 1310nm (Ps/nm.km)	≤ 3.5 ps/nm.km
CD Optical dispersion at 1550nm (Ps/nm.km)	≤ 18 ps/nm.km
Bend radius R (Cm)	R ≤ 3cm
Maximum tension (N/cm)	≥ 90N/cm
Maximum Crushing strength (N/cm)	≥ 550N/cm
Operating temperature (0C)	-40 - 75
Storage temperatures (0C)	-40 - 85
Connector	SC/UPC, SC/APC, LC/UPC
Type of shell	Yellow, Duplex, diameter 2mm LSZH
Insertion Loss (dB)	≤ 0.2 (connector UPC)
	≤ 0.3 (connector APC)
Return loss (dB)	≥ 50 (connector UPC)
	≥ 65 (connector APC)